

Safe Centre of Peel



INTIMATE PARTNER
VIOLENCE UNIT

Peel Police Services Board Presentation Intimate Partner Violence

May 2021



INTIMATE PARTNER VIOLENCE UNIT



Safe Centre of Peel

Vision:

Our Community lives free from the impact of violence



Mission:

To Strengthen our community by providing single point of access to services that are coordinated, responsive and accessible to those experiencing family and intimate partners violence.



Before the Safe Centre & PRP IPV Unit

Barriers to Safety

- Navigating complex systems
- Lack of communication between service providers
- Women telling their story over & over
- No childminding
- Transportation challenges
- Limited access to legal information
- Language and cultural barriers
- Intimidated by police and child welfare



Peel Regional Police Moves into the Davis Centre

Toronto

Why this officer has a special role to play in the new Peel police intimate-partner violence unit



Unit formed this week after several high-profile homicides and murder-suicides in Peel



Philip Lee-Shanok - CBC News

Posted: April 24, 2021

Last Updated: April 26, 2021



In 1993, Peel Det. Const. Katherine Kulbak left an abusive husband with her baby girl in her arms and little else. Now Kulbak, 54, is one of the 48 staff of a specialized Intimate Partner Violence Unit located inside the Safe Centre of Peel in Brampton. (supplied)

Toronto

Peel police saw domestic violence calls increase 74% in 5 years. A new unit aims to tackle the problem



Partnership between community group and police in Peel is trying to make it easier for victims to get help



Farrah Merali - CBC News

Posted: December 10, 2021



Geri Dornford's friend Brittney Newman was killed in February 2020. Newman's former partner is charged with second degree murder in connection with the death. (Susan Reid/CBC News)



- **From April 30th 2021 to April 30th 2022 IPV Unit took carriage of 3025 Investigations and laid 6445 Criminal Charges.**
- **Each month there were an average of 252 IPV related occurrences.**

Each occurrence is a referral to the Safe Centre of Peel

Today

- Risk Assessments & Safety Planning
- Multilingual service delivery
- Child-minding & Transportation
- Collaborative information exchange
- Women tell their story once
- Housing support
- Family Court support



- Specialized Police Response
- Soft interview rooms for police investigations





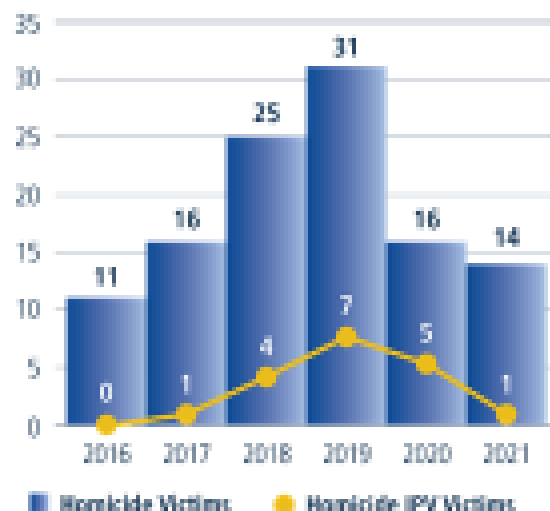
Intimate Partner Violence Reduction Strategy

Reported* Intimate Partner Disputes 2016-2021



*Reported Occurrences (Includes Actual and Unfounded violations).

Yearly Homicide Victims & Homicide Victims Involving IPV 2016 - 2021



How the Strategy fits into Community Safety and Well-Being:

Incident Response

- Enhanced Front line Response
- Intimate Partner Violence Unit
- Trauma-Informed Response
- Collaborative Approach to Provide Wraparound Service

Risk Intervention

- Safety Planning
- Survivor Crisis Support
- Offender Management
- Situation Tables

Social Development

- Service Provider Advocacy
- Programming for Communities by Communities
- Survivor Support Programs
- Offender Support Programs

Prevention

- Risk Evaluation and Management in Peel (REVAMP) Referrals
- Early Intervention Support Program
- Public Education
- Media (Social Media, News)



3 of the top 4 most frequent incidents reported to Peel Regional Police are family and intimate partner violence related.



Average rate of family and intimate partner incidents investigated by Peel Regional Police in 2021:



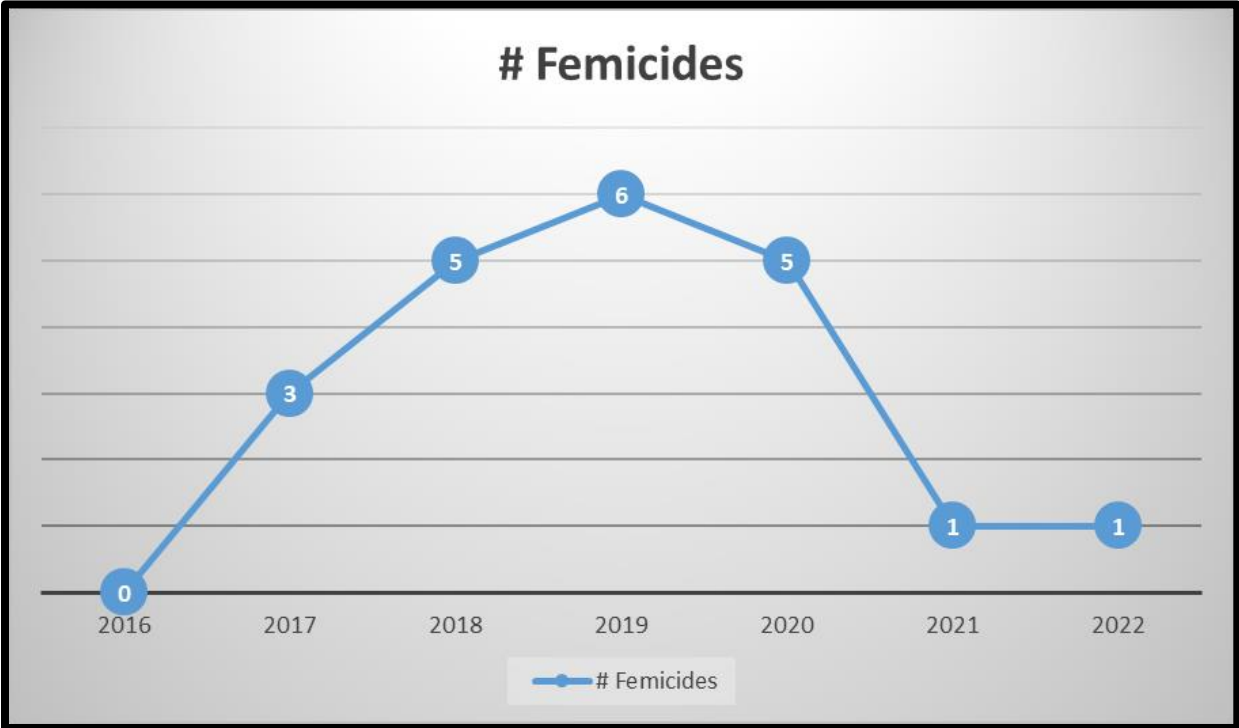
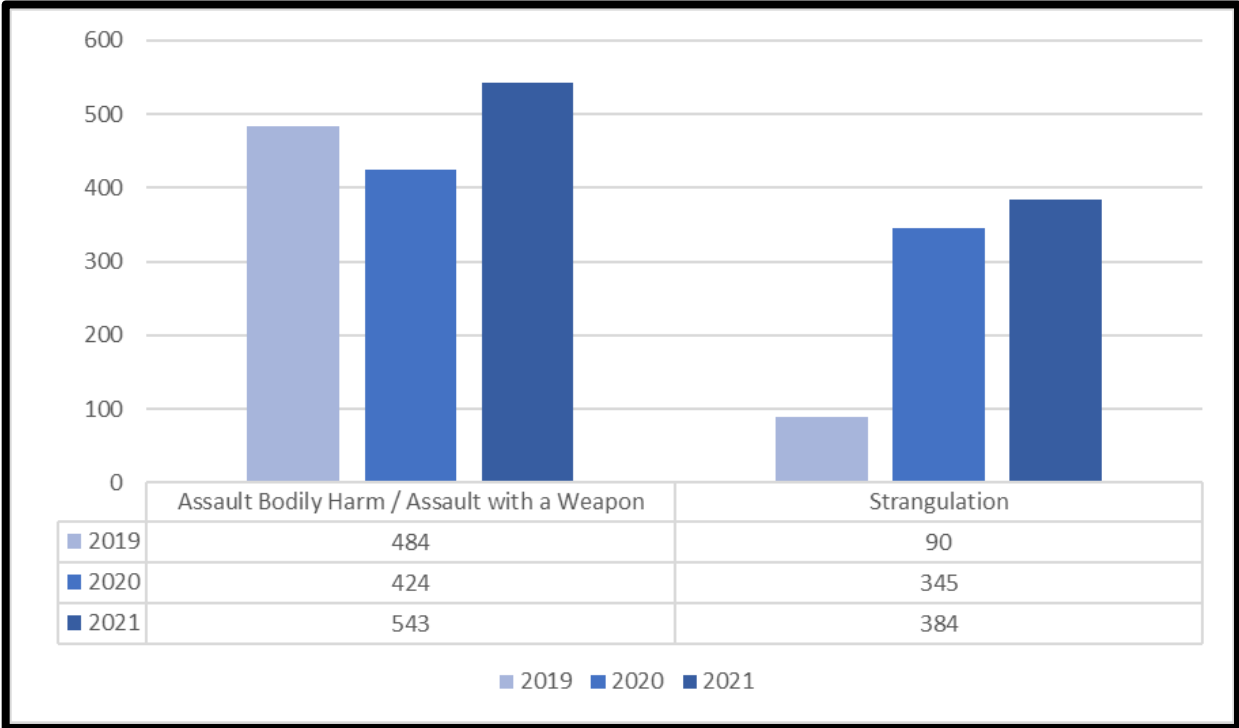
In 2021, police in Peel Region responded to 16,352 incidents of family and intimate partner violence. Those are just the incidents that were reported.

PeelRegion.ca/ItsNotOkay

PeelPolice.ca/IPV



Charge Severity Index



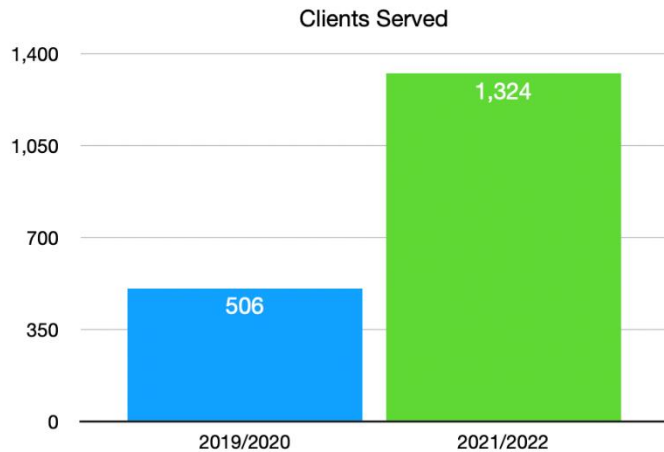
OATH Reported 10 Femicides in Peel Region November 2019 - 2021



- Imebet Foster
- Maria Manuela-Correia
- Dalbir Randhawa
- Darian Hailey Henderson-Bellman
- Sharanjeet Kaur
- Belynda Kerelchuk
- Brittney Newman
- Heeral Patel
- Sangita Sharma
- Marion Wallace



Program Numbers & Outcomes



In 2019/2020 year
we served **506** clients

In 2021/2022 we anticipate
serving **1,324** clients

- **96%** of clients felt that they were connected to the services they needed
- **98%** of clients felt that staff were working together to help them
- **97%** of clients felt it was helpful to receive services in one location

“Safe, informative, no rush, no judgement, helpful service and staff”

“It truly makes me feel safe from the situation I am going through”

“The counsellor was empathetic & listened to what I had to say”

We've Made a Promise

We lack **sustainable**
resources for
community agencies
to deliver on our
promise to
women & children
in Peel

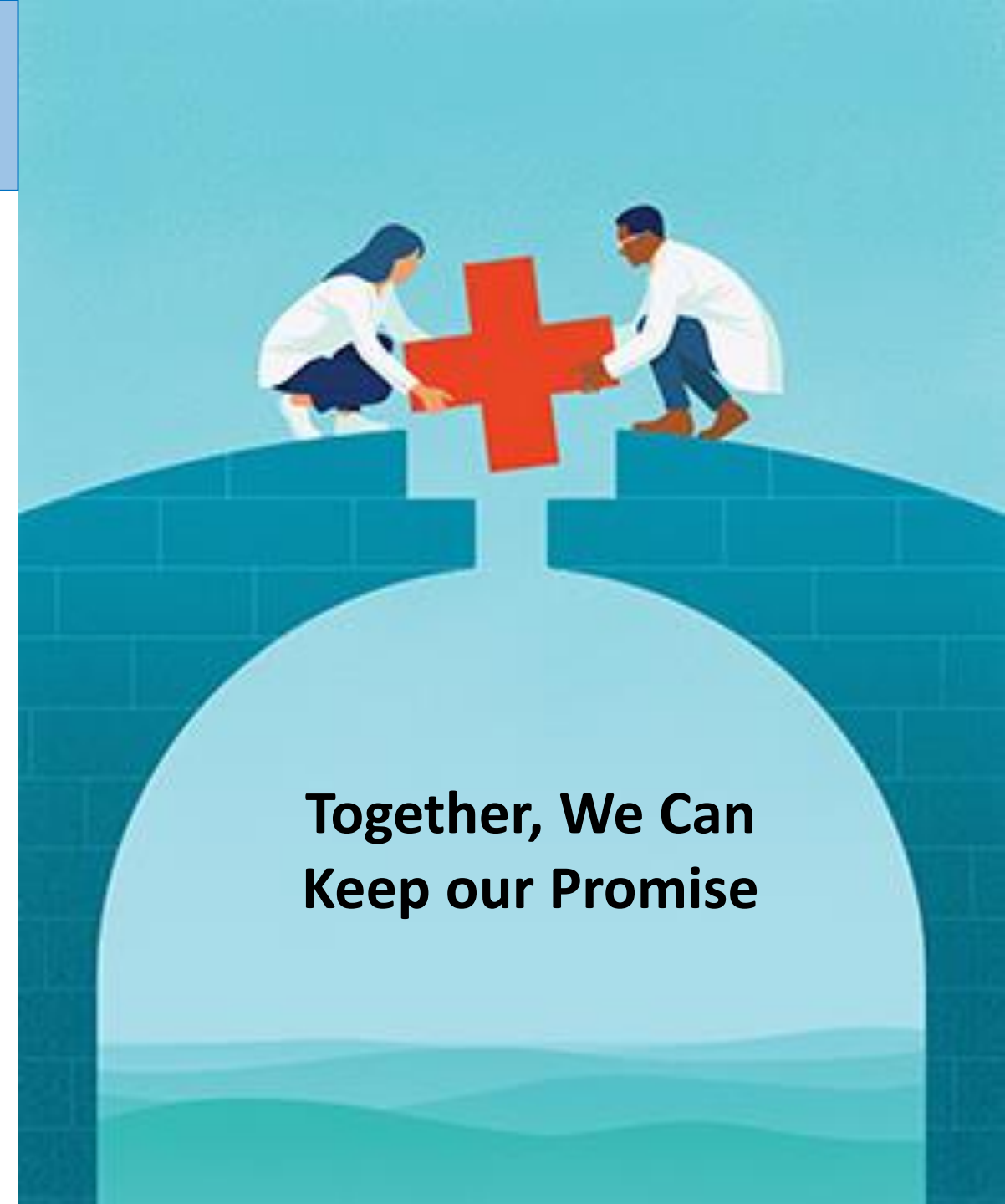


**Each occurrence the PRP IPV Unit
responds to is a referral to the
Safe Centre of Peel**

Future Needs & Growth

Intimate Partner Violence is a community problem that requires a community solution.

1. The Development of a Sustainable Funding Model
2. A Mississauga Location
3. An upstream response to prevent the escalation of violence



**Together, We Can
Keep our Promise**

Thank You for Making Family Violence a Priority



Break the silence.

Share your story.

You are not alone.
We are here to listen.
We are here to help.

If you are experiencing abuse,
call 905-403-0864
or **1-855-676-8515**

peelregion.ca/BreakTheSilence

Region of Peel
working with you



NEWS

Region of Peel approves community safety and well-being plan for Brampton and Mississauga

Ontario Provincial Police provide police services in Caledon

By [Marta Marychuk](#) ✓ Brampton Guardian

Monday, October 26, 2020



INTIMATE PARTNER VIOLENCE UNIT

