



2022 ANNUAL HATE-MOTIVATED CRIME REPORT

HIGHLIGHTS

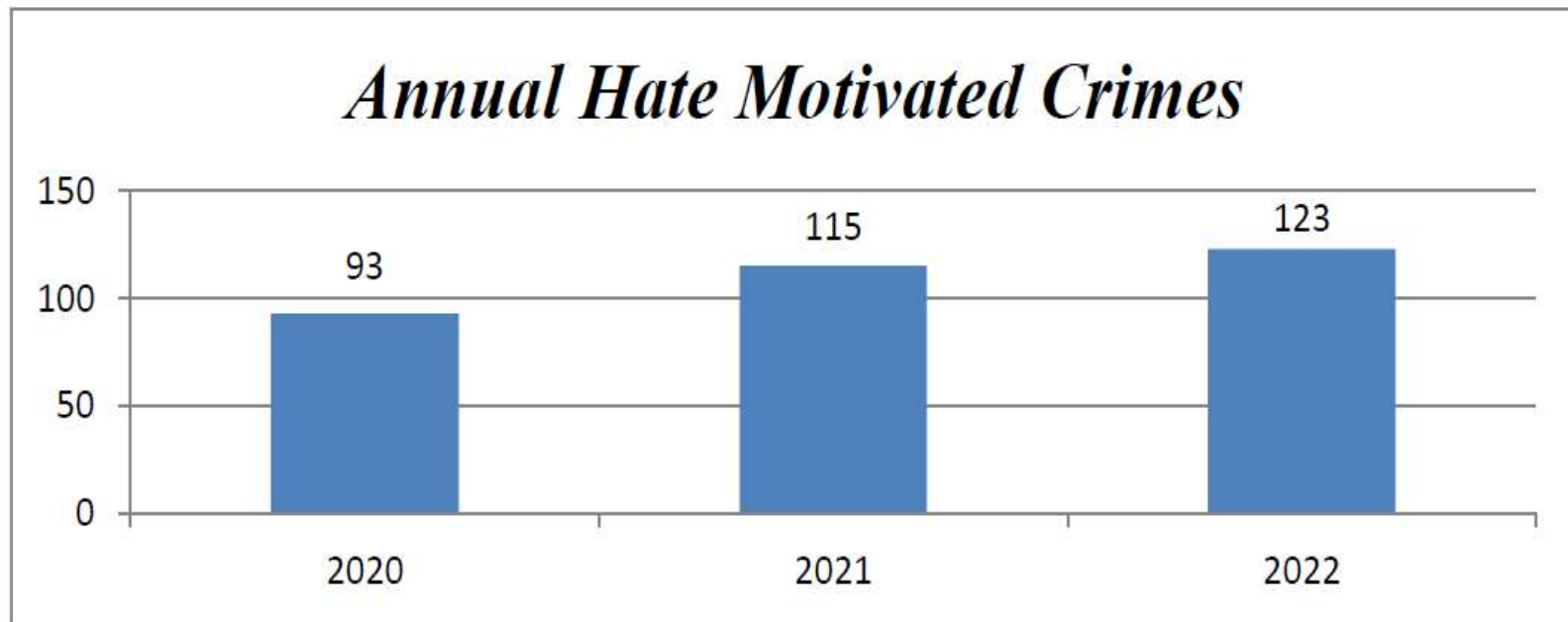
DIVERSITY, EQUITY AND INCLUSION

COMMUNITY SAFETY AND WELL-BEING SERVICES

2022 HATE MOTIVATED CRIMES

The total number of Criminal Code offences reported to Peel Regional Police in 2022 was 42,832. Of those, 123 were hate-motivated crimes.

- 37 (30%) of the 123 reported hate motivated crimes resulted in charges.



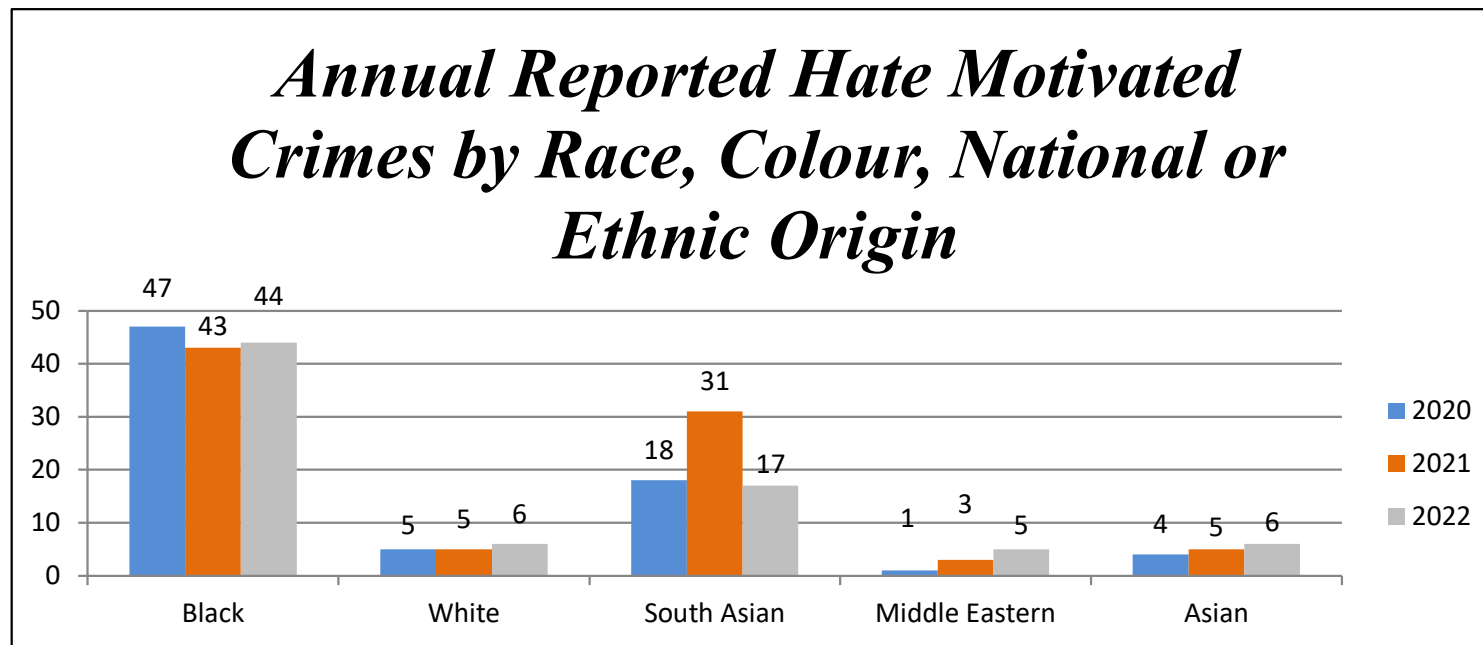
Graph 1: Total number of reported hate motivated crimes 2020 to 2022

HATE MOTIVATED CRIMES BY RACE

The following graph outlines hate crime victimization reported to Peel Regional Police against ethnic origin and/or racial background from 2020 to 2022.

In 2022, there were:

- 44 (56%) instances against the Black communities
- 17 (22%) instances against the South Asian communities
- 6 (8%) instances against the White communities
- 6 (8%) instances against the Asian communities
- 5 (6%) instances against the Middle Eastern communities



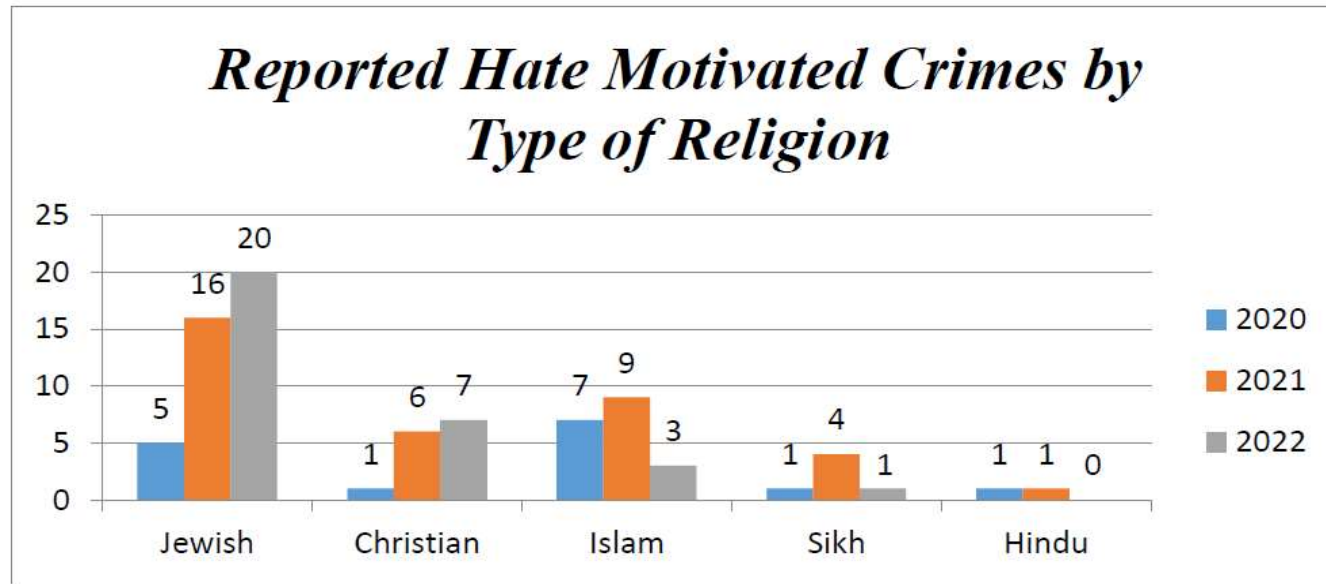
Graph 2: Hate motivated crimes based on ethnic origin and/or racial background 2020-2022

HATE MOTIVATED CRIMES BY RELIGION

The following graph represents the total number of hate motivated crimes reported to Peel Regional Police targeted against religious groups from 2020 to 2022.

In 2022, there were

- 20 (65%) instances against the Jewish community
- 7 (23%) instances against the Christian community
- 3 (10%) instances against the Muslim community
- 1 (3%) instance against the Sikh community
- 0 instances against the Hindu community



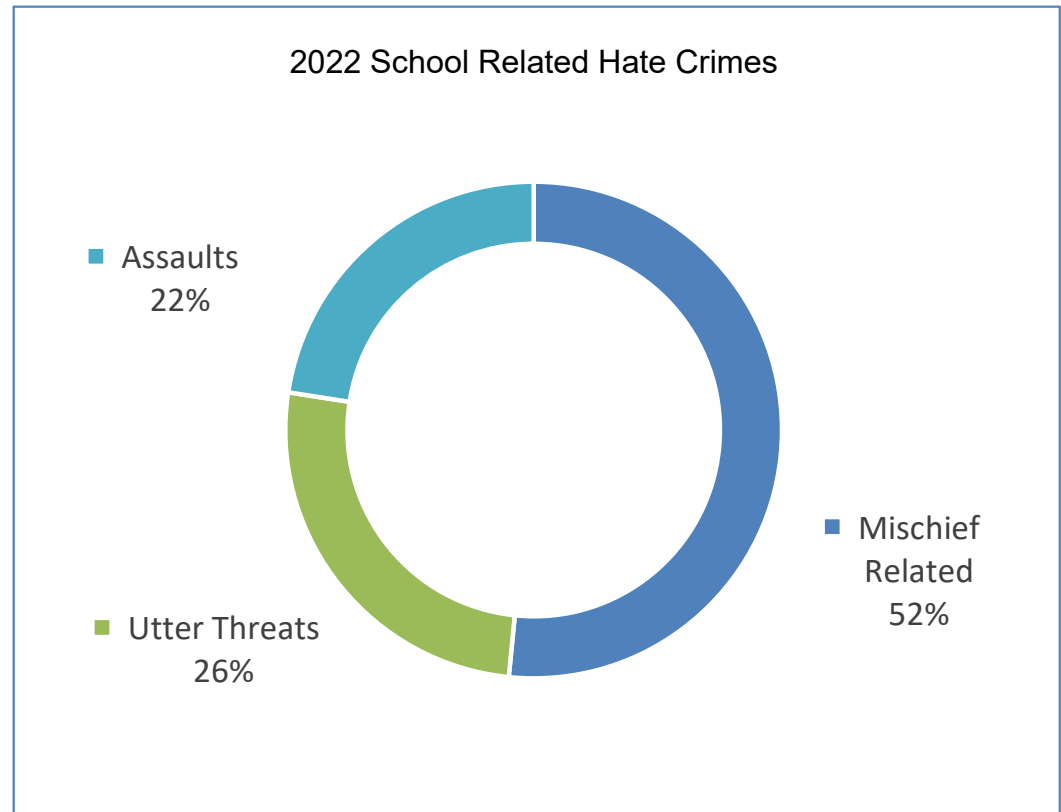
Graph 3: Total number of reported hate motivated crimes by type of religion from 2020-2022

SCHOOL-RELATED HATE CRIMES

In 2022, there were 31 reported school-related hate crimes, which represents an 82% increase over those 17 incidences from 2021.

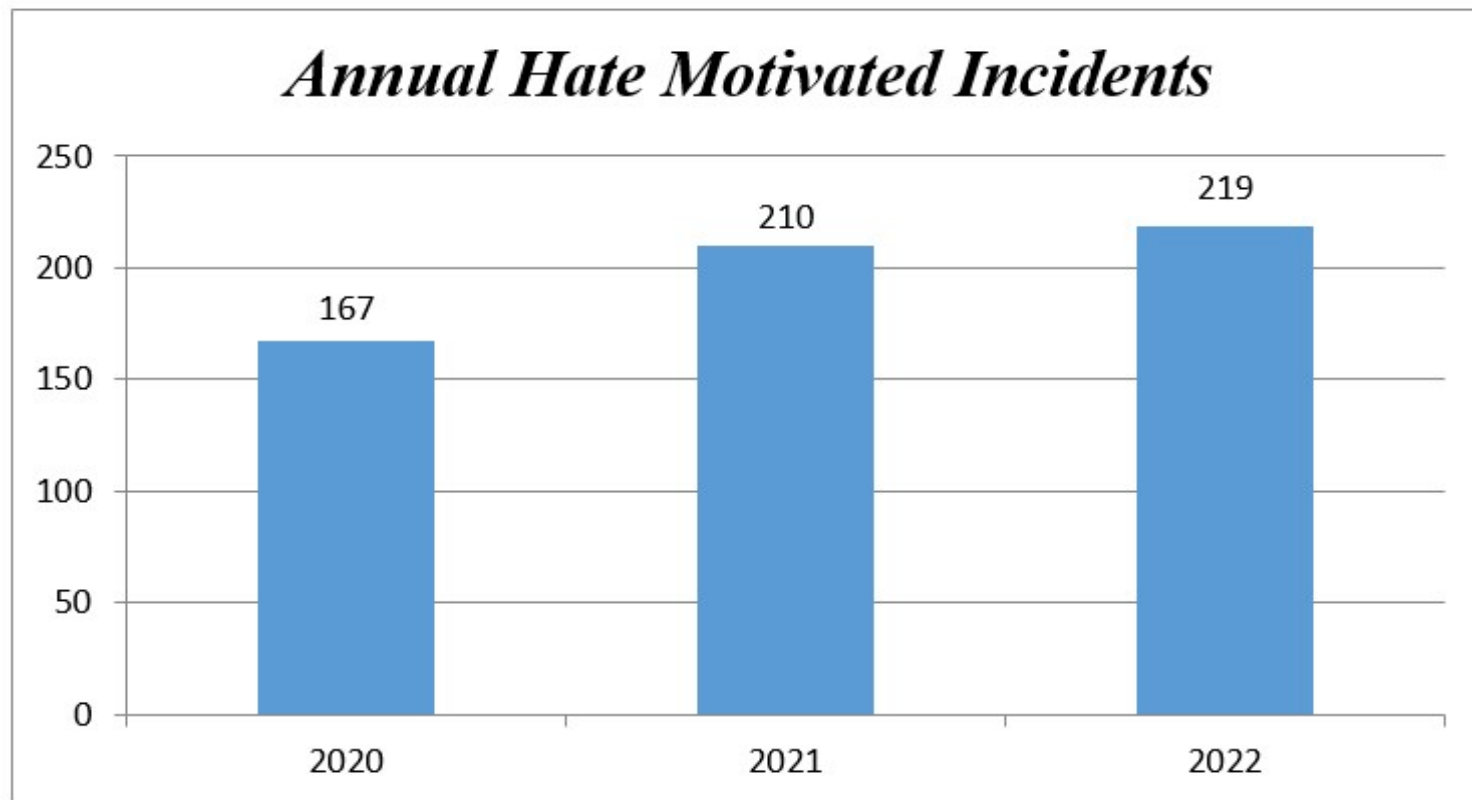
Of those 31 school-related hate crimes, there were:

- 16 (52%) mischief related
- 8 (26%) utter threats
- 7 (23%) assaults



HATE MOTIVATED INCIDENTS

Peel Regional Police recorded 219 occurrences of hate motivated incidents in 2022, a slight increase from the 210 reported in 2021



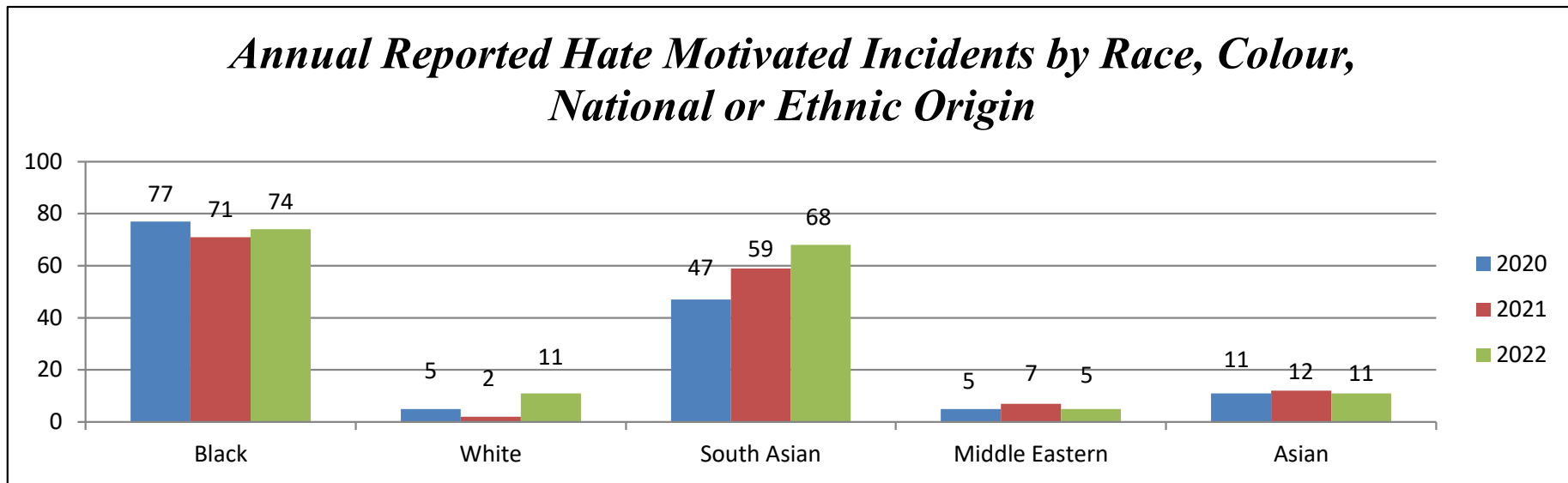
Graph 4: Total number of reported hate motivated incidents 2020 to 2022

HATE MOTIVATED INCIDENTS BY RACE

The following graph outlines hate motivated incidents based on ethnic origin and/or racial background from 2020 to 2022.

In 2022, there were:

- 74 (44%) incidents against the Black communities
- 68 (40%) incidents against the South Asian communities
- 11 (7%) incidents against the White communities
- 11 (7%) incidents against the Asian communities
- 5 (3%) incidents against the Middle Eastern communities



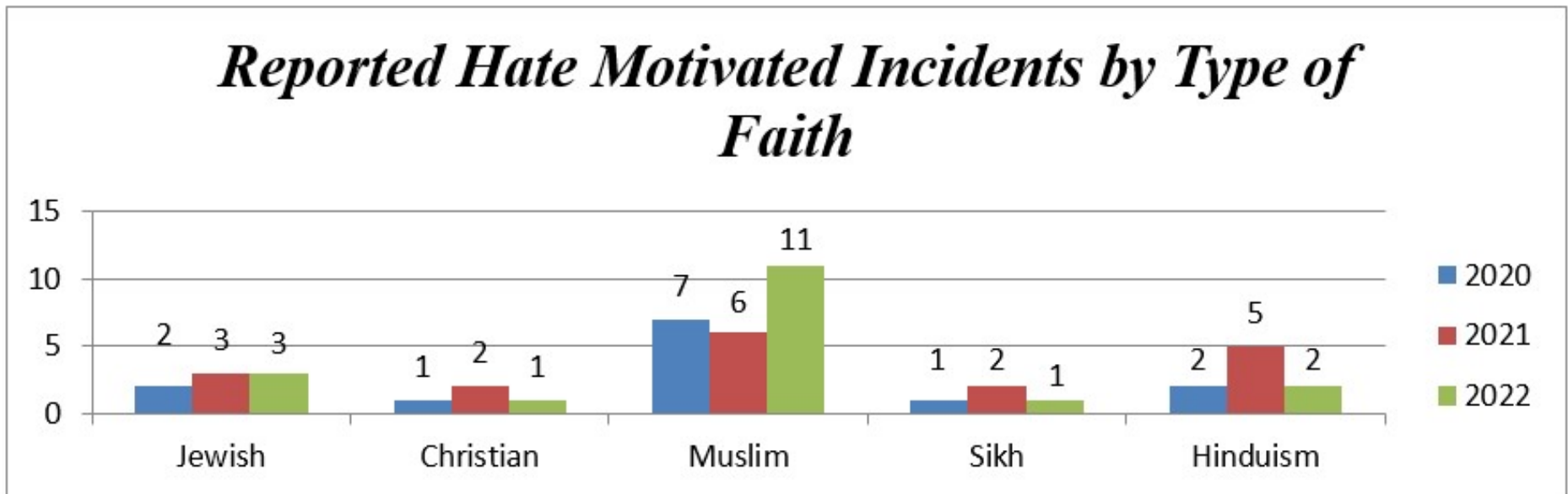
Graph 6: Hate motivated incidents by type of race and/or ethnic origin from 2020 to 2022

HATE MOTIVATED INCIDENTS BY RELIGION

The following graph represents the total number of hate motivated incidents reported to Peel Regional Police from 2020 to 2022 targeted against religious groups.

In 2022, there were:

- 11 (61%) incidents against the Muslim community
- 3 (17%) incidents against the Jewish community
- 2 (11%) incidents against the Hindu community
- 1 (6%) incident against the Christian community
- 1 (6%) incident against the Sikh community



Graph 7: Hate motivated incidents by type faith from 2020 to 2022

PUBLIC SAFETY CANADA



COMMUNITY RESILIENCE FUND

- Community Safety and Well-Being Services has been awarded a Community Resilience Fund grant from Public Safety Canada to support the National Strategy on Countering Radicalization to Violence (CRV).
- **DURATION:** one (1) year period.
- **PROJECT OVERVIEW:**
 - Peel Regional Police (PRP) will co-create a hate-motivated crimes / incidents training module in consultation with community partners and ensure the curriculum is readily adaptable to and appropriate for a wide range of community settings and audiences.
 - We will then adopt a train-the-trainer model to enable our partners to deliver the message to the community with the intent of raising awareness and increasing reporting. We hope that this will have a positive effect on our efforts to mitigate the threats of hate, bias and extremist violence in our region.

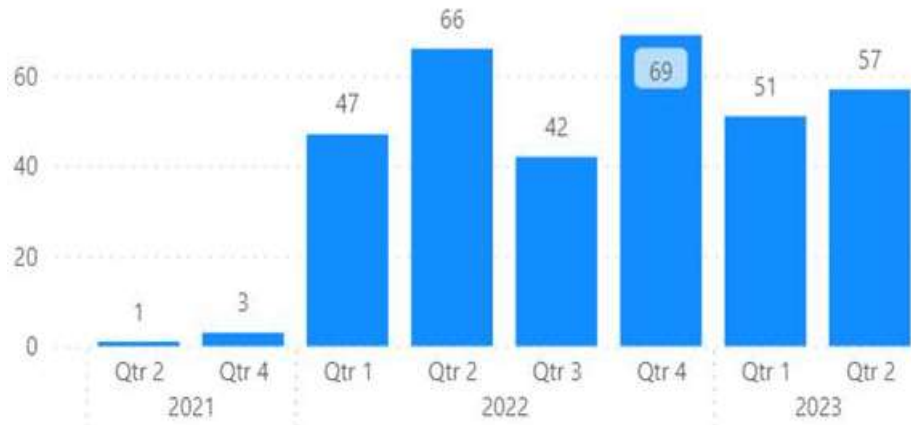
DIVERSITY, EQUITY AND INCLUSION UNIT

1. In 2022, officers from Diversity, Equity and Inclusion Bureau continued to promote awareness and educate the community via virtual and in-person seminars on hate-motivated crimes and incidents.

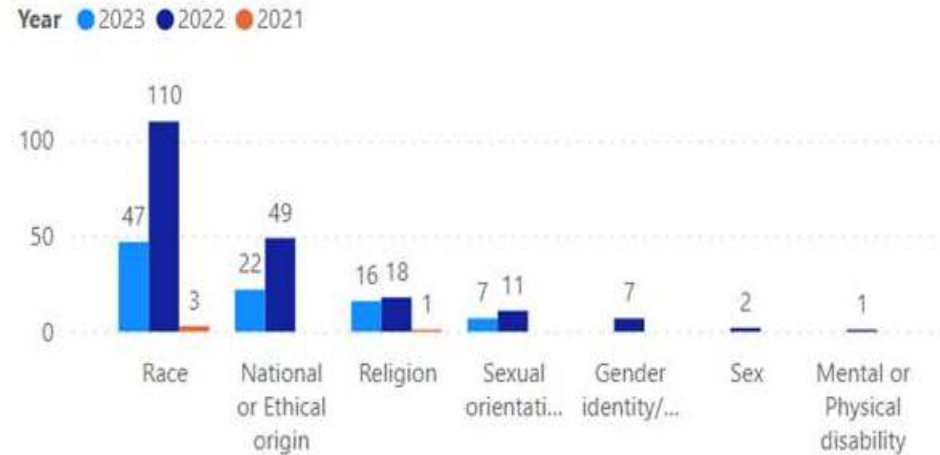
2. Promoted Initiatives and Programs:
 - Safe Place Program;
 - Reassurance Protocol;
 - D.E.I. Analytics Dashboard;
 - Run-Hide-Defend Program;
 - Dynamic Training Programs;
 - Co-development and on-going training delivery on the advanced Ontario Police College (OPC) Hate Crime and Extremism course.

D.E.I. ANALYTICS DASHBOARD PREVIEW

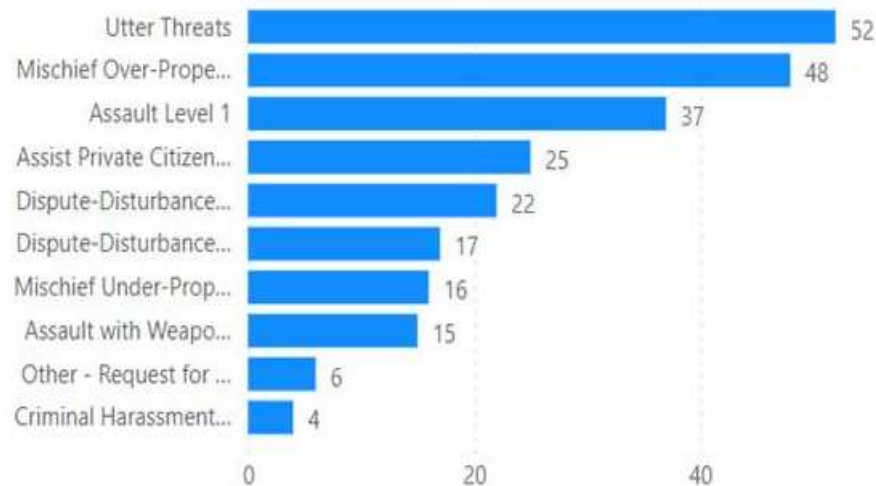
of Occurrence Time Trend



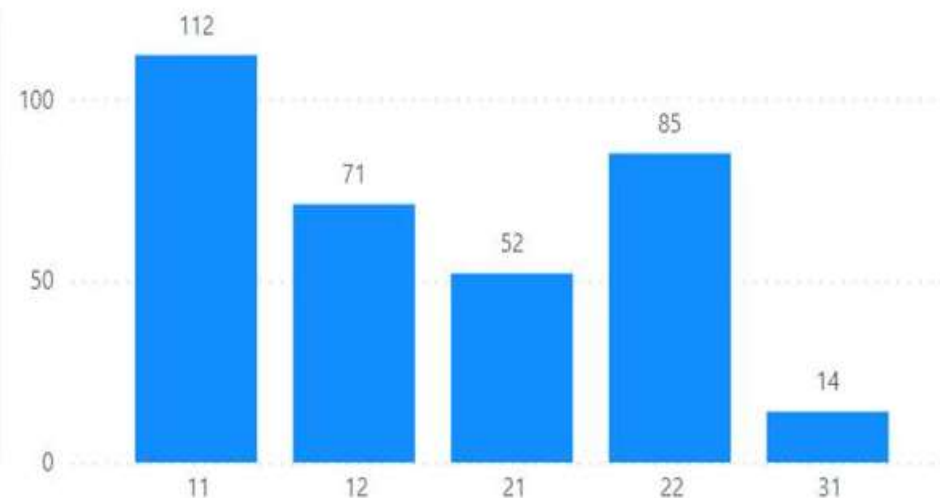
of Occurrence by Motivation



of Occurrence by Occurrence Type



of Occurrence by Division

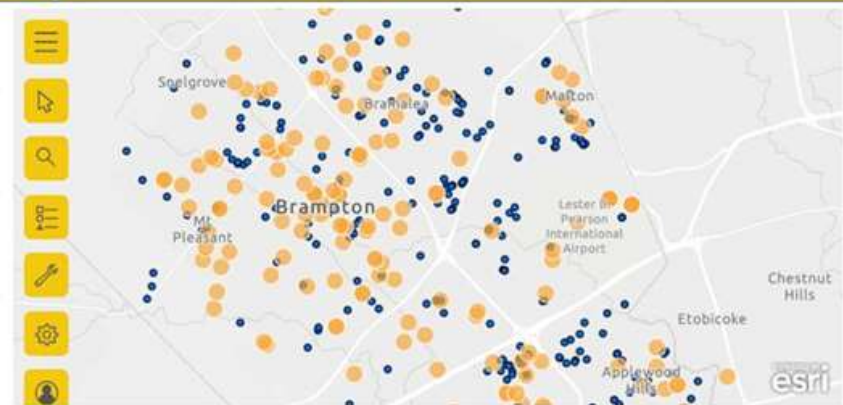
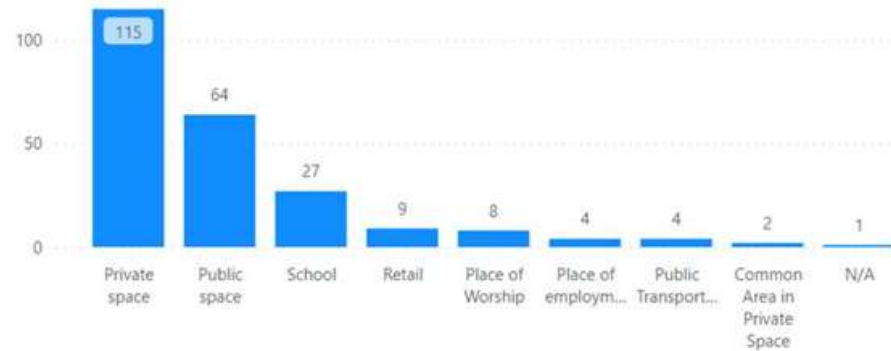


D.E.I. DASHBOARD CONT'D

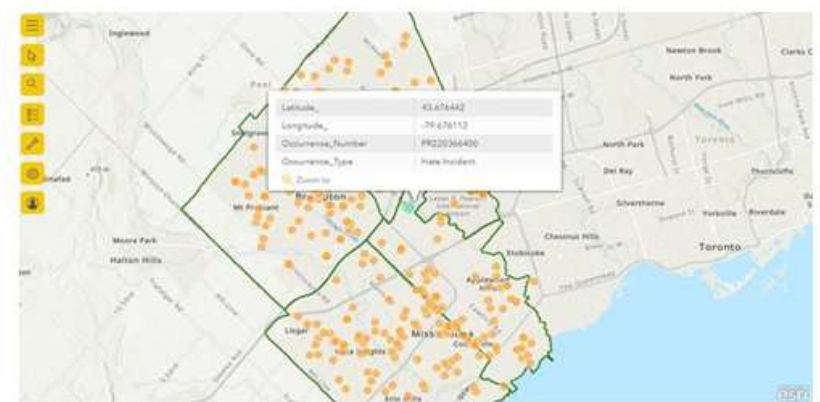
Number Of Hate Crime	Complete	On-going	Number of Hate Incident	Complete	On-going
100	86	14	191	163	28

Geographic Analysis

Occurrence Address Type



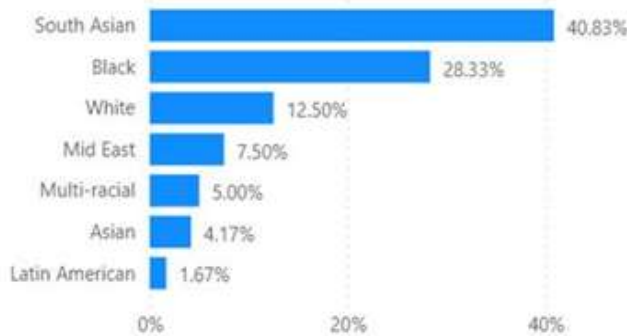
This Screen shot shows the Spatial analysis and Occurrence Status track , use is able to track hate crime/ hate incident status and hate crimes breakdown by address type.



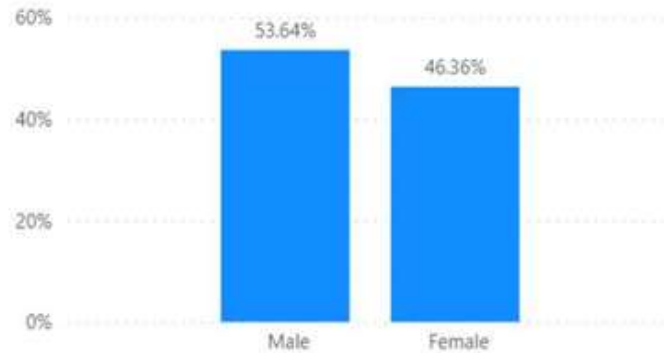
D.E.I. DASHBOARD CONT'D

Victim Demographics

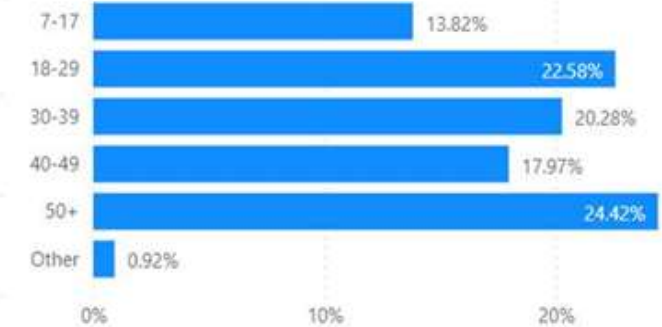
% of Occurrence by Victim Race



% of Occurrence by Victim Gender

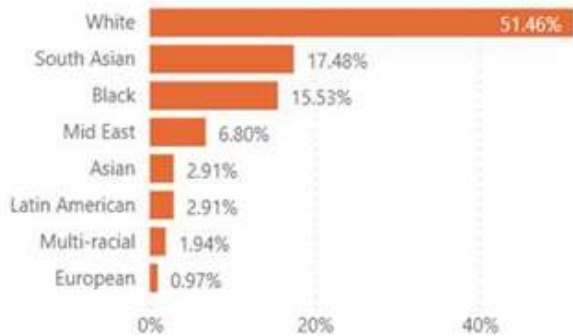


% of Occurrence by Victim Age Group

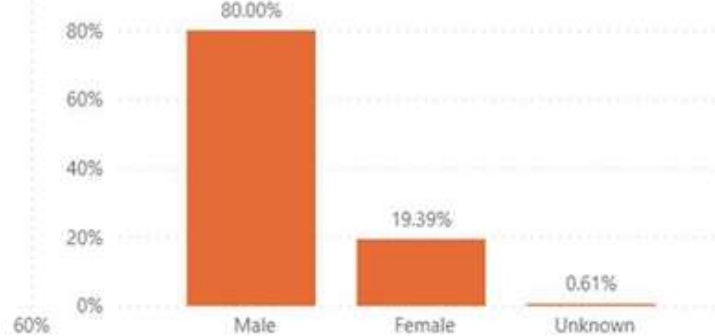


Offender Demographics

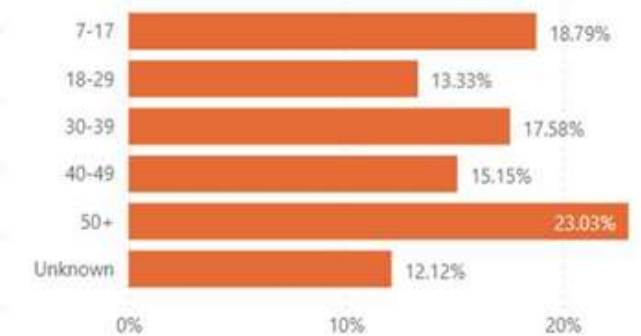
% of Occurrence by Offender Race



% of Occurrence by Offender Gender



% of Occurrence by Offender Age Group





THANK YOU